

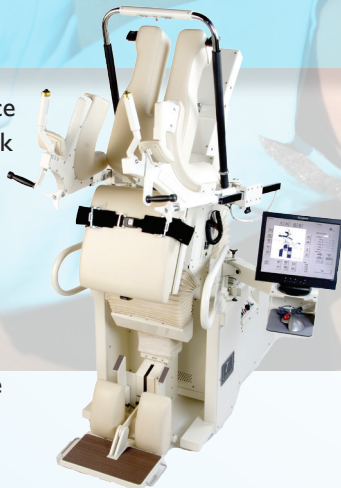
Imagine... Life Without Back Pain

Extentrac® Elite

The Extentrac® Elite is a breakthrough device for the non-surgical treatment of lower back pain and sciatica.

Its patented M3D technology is unsurpassed in precision spine positioning, safety and patient comfort.

Extentrac® Elite enables 3 dimensional spine positioning for customized treatment.



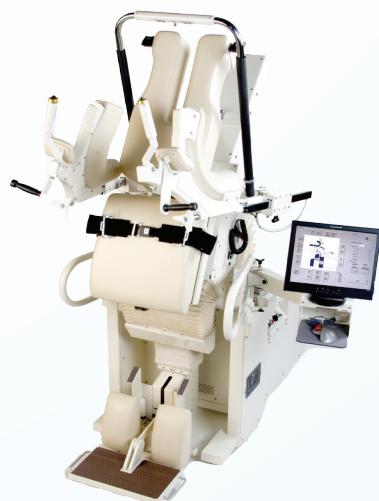
Extentrac[®] Elite with M3D Technology means Freedom and Flexibility Freedom and Flexibility

The Extentrac[®] Elite is a breakthrough medical device for the non-surgical treatment of low back pain and sciatica. Its patented M3D technology is unsurpassed in precision spine positioning, safety and patient comfort. Extentrac[®] Elite enables 3 dimensional spine positioning for customized treatment.

Distinctive Benefits Include:

A non-invasive, painless procedure.

- Treatment in pain relieving positions utilizing Extentrac[®] Elite's state-of-the-art M3D spine positioning system.
- Patients may stand or lie down for treatment.
- Decompression (unloading the spine with distraction and positioning) in therapeutic positions of flexion (bending forward), extension (bending backward) or lateral flexion (side bending). This is not offered by conventional decompression devices which limit patient positioning to the straight position and restrict spinal motion.
- Vertical, horizontal, face up or face down patient positions enable the implementation of research proven evidence-based therapeutic procedures, while accommodating individual patient weight and physique.
- Targets specific discs for directed treatment to the source of pain - a vital and essential part of the Extentrac[®] Elite's M3D System.
- Extentrac[®] Elite's 3D spine positioning system with its movable leg and lumbar patient treatment platform, provide the physician the freedom and flexibility to incorporate important therapeutic spinal mobilization (movement) for effective restoration of the normal spinal ranges of motion.



How it Works

The patient steps onto the foot platform, and is positioned in the face up or face down position, based on individual spinal pathology. Padded underarm supports and stabilization belts are utilized to safely secure the patient and provide the means of applying the distraction force. Early on, treatment may be initiated with proprietary gravitational and exercise protocols. By utilizing the patient's own body weight as the force of distraction, when combined with extension or flexion patient positioning, a synergy of benefits occur with improved treatment outcome.

Extentrac® Elite affords the physician the ability to treat patients by applying hands-on therapeutic procedures and evidence-based protocols in addition to fully automated treatment cycles. These include successful flexion-distraction disc therapy and spinal mobilization to restore the normal spinal ranges of motion and joint mobility.



Extentrac® Elite affords the physician the ability to treat patients by applying hands-on therapeutic procedures and evidence based protocols in addition to fully automated treatment cycles. These include successful flexion distraction disc therapy and spinal mobilization to restore the normal spinal ranges of motion and joint mobility.

Extentrac® Elite has a proven record of safety and effectiveness in non-surgical disc and spine care exceeding 20 years, without patient injury. Health professionals worldwide, utilizing the new Extentrac® Elite, have unanimously confirmed excellence in clinical outcomes in the management of low back pain in both private practice and hospital physical rehabilitation facilities.

A patented, non surgical device for the treatment of lower back pain. Its revolutionary rotating, multi-positional 3D platform provides the clinician with unprecedented freedom and flexibility in implementing a wide range of non-surgical therapeutic procedures and proven methodologies (evidence-based), not limited to conventional axial (straight) decompression.



What does M3D stand for?



Multi-Directional Disc Decompression

Extentrac®Elite's patented M3D System offering Multi-Directional Disc Decompression is the most advanced, high-tech therapeutic and rehabilitation device available for patients suffering with back pain.

Distinctive Benefits Include:

- A non-invasive, painless procedure
- Treatment in pain relieving positions
- Patients may stand or lie down for treatment
- Decompression (unloading the spine with distraction and positioning) in therapeutic positions of flexion (bending forward), extension (bending backward) or lateral flexion (side bending)
- Vertical, horizontal, face up or face down patient positions enable the implementation of research proven evidence-based therapeutic procedures
- Targets specific discs for directed treatment to the source of pain
- Extentrac® Elite's patented 3D spine positioning system provides the physician the freedom and flexibility to incorporate important therapeutic spinal mobilization for effective restoration of the normal spinal ranges of motion.

How much time is reserved for each treatment?

The average treatment time is 15 minutes. This is due to the flexibility of customized treatment protocols which target the area in need of correction. Treatment time depends on type of condition. Some patients require manual treatment, others only require automated protocols. There are patients who feel relief in 10 minutes, while others may require 20 minutes. Chronic, acute, maintenance, etc. But overall, 15 minutes is the average time.

How many treatments are typical for each patient?

Number of treatments is dependent upon the diagnosis and prior treatment history. Increments of 10 visits is recommended to assess patient progress during that time. Patients with severe pain and stenosis with greater spinal pathologies on MRI or x-ray may require an upfront recommendation of 25 visits. Surprisingly, some patients with stenosis and severe spinal pathologies may respond within 10 treatments. Follow up treatment of

Who is not a candidate to be treated?

Unfortunately, the Extentrac® Elite is not for everyone. It is not advisable to use the Extentrac® Elite if the following conditions are present:

The presence of infections

Cardio-vascular disease

Metabolic diseases (severe osteoporosis, osteomalacia)

Fractures of the vertebrae

Inguinal hernia or Umbilical hernia (must use additional abdominal hernia strapping)

Prolaps uteri, and prolapsed recti

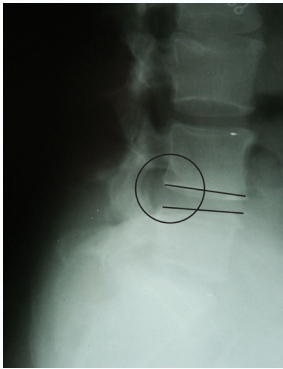
Pregnancy or during mending stages of post-partem

Tumors

Tuberculous lesions of the spinal column.

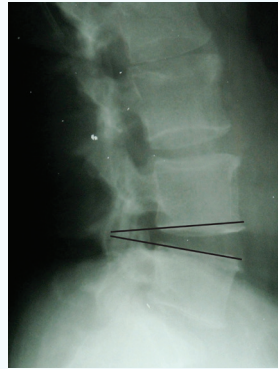
Hypotension

Patients presenting cauda equina syndrome symptoms (i.e. bladder or bowel paresis or incontinence)



Pre-Extentrac® Elite Treatment

- Abnormal widening of posterior disc space at L4-L5 with straightening in the normal lumbar lordosis.
- Patient presented with severe radiating lower back and leg pain (sciatica) and muscle spasm.



Post-Extentrac® Elite Treatment

- Normal posterior disc space at L4-L5 with normal lumbar lordosis
- Patient is now asymptomatic.

Extentrac® Elite has received the United States Food and Drug Administration (FDA) clearance, following stringent product safety reviews.

Its FDA registered "Indications of Use" are for low back pain and radiating pain (sciatica) due to the following conditions:

- Protruding or herniated discs
- Acute facet problems
- Degenerative disc disease



Distinctive Benefits Include:

A non-invasive, painless procedure.

- Treatment in pain relieving positions utilizing Extentrac® Elite's state-of-the-art M3D spine positioning system.
- Patients may stand or lie down for treatment.
- Decompression (unloading the spine with distraction and positioning) in therapeutic positions of flexion (bending forward), extension (bending backward) or lateral flexion (side bending). This is not offered by conventional decompression devices which limit patient positioning to the straight position and restrict spinal motion.
- Vertical, horizontal, face up or face down patient positions enable the implementation of research proven evidence-based therapeutic procedures, while accommodating individual patient weight and physique.
- Targets specific discs for directed treatment to the source of pain - a vital and essential part of the Extentrac® Elite's M3D System.
- Extentrac® Elite's 3D spine positioning system with its movable leg and lumbar patient treatment platform, provide the physician the freedom and flexibility to incorporate important therapeutic spinal mobilization (movement) for effective restoration of the normal spinal ranges of motion.



POWERFUL



**CUSTOMIZED 3 DIMENSIONAL
TREATMENT**

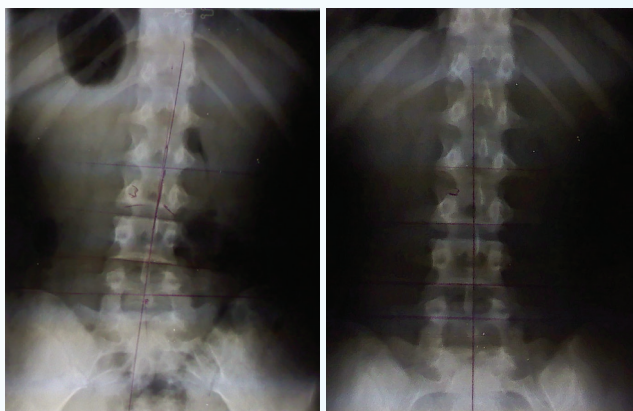
Patient Testimonials

“As an athlete, I have subjected my body to rigorous training activities in order to stay on top of my game. Throughout my career with the style of play that I emphasize, I have put a lot of strain on my lower back area. Over the years, I have tried numerous types of treatments from chiropractic, physical therapy, myofascial therapy, acupuncture and other decompression tables in order to keep my body in peak physical condition.

Even though I felt relief for short periods of time with the other apparatuses including traction and new decompression tables, I have felt the most sustained relief using the Extentrac® Elite. It has given me the ability to put my body back into proper alignment so that I can continue to condition at a high level of training necessary to sustain maximum performance of my sport.”

- Steve Webb, NHL Player

“Thank you for referring me for Extentrac® treatments. You were absolutely correct in your belief that I had reached a point in treatment which required traction and extension of my spine in order to alleviate the extreme damage to my lower back (discs and sciatica problem). I am pleased to report my remarkable recovery. Using Extentrac® to treat my injury, has resulted in my ability to stand erect and to no longer experience pain in my right hamstring area.” - Stanley Rochelle, Satisfied Patient



Patient: 15 Year Old Gymnastics Student

Symptom: Low Back Pain

Diagnosis: Scoliosis

Treatment: M3D Protocols utilizing Extentrac Elite

Number of Visits: 10 fifteen minute treatments

Results: No More Pain/More Flexibility

